

Specification Sheet

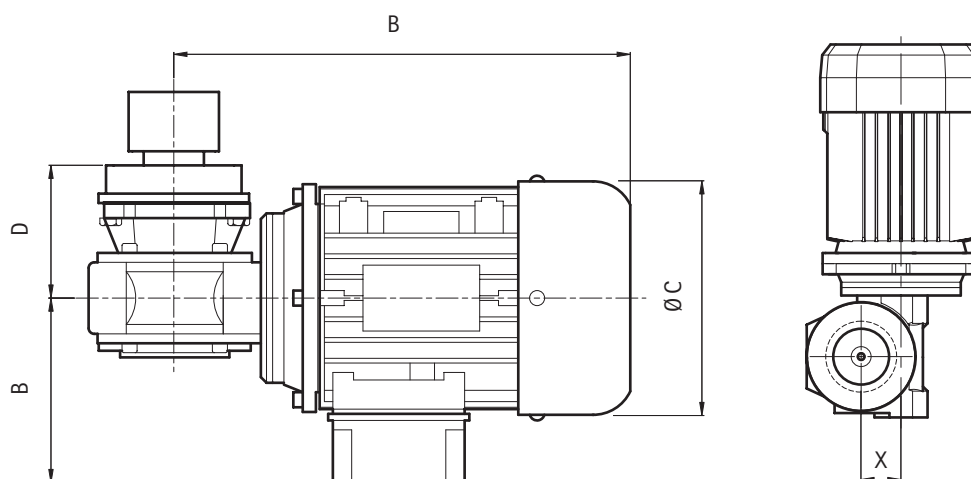
NovAseptic[®] Mixer, Drive Unit, GMP

Catalogue Number:

GM#-4#-64#0

Product Description

The NovAseptic mixers offer a complete solution for mixing throughout the process line and are designed for a wide variety of mixing applications in the pharmaceutical and biotechnology industries.



Catalogue No. Structure

GM	#	/	4#	#	#	-	64#0
Mixer	Size		Surface Treatment A = Speed Counter compatible Drive Unit B = Drive Unit with Speed Counter	Shaft Option 0 = 0 mm standard 2 = 100 mm extension	Drive Unit Color 1 = Green		Motor

Nominal Dimensions in mm (in.)

Catalogue No.	A	B	C	D	X	Mixer Model
GM05/4A01-6410	278.5	115	130	97	31	GMP50
GM05/4A11-6410	278.5	115	130	140	31	GMP50
GM05/4B01-6410	278.5	115	130	97	31	GMP50
GM05/4B11-6410	278.5	115	130	140	31	GMP50
GM1/4A01-6410	278.5	115	130	85	31	GMP100
GM1/4A21-6410	278.5	115	130	170	31	GMP100
GM1/4B01-6410	278.5	115	130	85	31	GMP100
GM1/4B21-6410	278.5	115	130	170	31	GMP100
GM5/4A01-6420	300.5	124	145	85	31	GMP500
GM5/4A21-6420	300.5	124	145	170	31	GMP500
GM5/4B01-6420	300.5	124	145	85	31	GMP500
GM5/4B21-6420	300.5	124	145	170	31	GMP500
GM10/4A01-6420	300.5	124	145	90	31	GMP1000
GM10/4A21-6420	300.5	124	145	170	31	GMP1000
GM10/4B01-6420	300.5	124	145	90	31	GMP1000
GM10/4B21-6420	300.5	124	145	170	31	GMP1000
GM20/4A01-6430	335	120	163	103	40	GMP2000
GM20/4A21-6430	335	120	163	191	40	GMP2000
GM20/4B01-6430	335	120	163	103	40	GMP2000
GM20/4B21-6430	335	120	163	191	40	GMP2000
GM50/4A01-6440	370	120	163	103	40	GMP5000
GM50/4A21-6440	370	120	163	195	40	GMP5000
GM50/4B01-6440	370	120	163	103	40	GMP5000
GM50/4B21-6440	370	120	163	195	40	GMP5000
GM100/4A01-6450	424.5	128	183	121	50	GMP10000
GM100/4A21-6450	424.5	128	183	215	50	GMP10000
GM100/4B01-6450	424.5	128	183	121	50	GMP10000
GM100/4B21-6450	424.5	128	183	215	50	GMP10000
GM200/4A01-6460	497	135	203	125	75	GMP20000
GM200/4A21-6460	497	135	203	220	75	GMP20000
GM200/4B01-6460	497	135	203	125	75	GMP20000
GM200/4B21-6460	497	135	203	220	75	GMP20000
GM300/4A01-6460	497	135	203	125	75	GMP30000
GM300/4A21-6460	497	135	203	220	75	GMP30000
GM300/4B01-6460	497	135	203	125	75	GMP30000
GM300/4B21-6460	497	135	203	220	75	GMP30000

Specifications

Net Weight (approximate)

Mixer Assembly	GMP50	GMP100	GMP500	GMP1000	GMP2000	GMP5000	GMP10000	GMP20000	GMP30000
Weight kg (lb)	8 (17.6)	8 (17.6)	10 (22.0)	10 (22.0)	17 (37.5)	18 (39.7)	29 (64.0)	45 (100.0)	47 (103.0)

General Motor Data

Voltage	230/400V AC - 50Hz and 460V - 60 Hz
Number of Poles	2
Degree of Protection	IP 55
Insulating Class	The Quality Assurance system ensure the quality and traceability at all stages of the process.
Ventilation	For non-standard NovAseptic Mixer Options, please contact us for information.
Color	Green, complies with the Code of Federal Regulations (FDA), US 21 CFR 170 - 199.
Oil	Synthetic, complies with the Code of Federal Regulations FDA 21 CFR
Certified	CE / CSA/ UL
Thermistor	1 (PTC, 155 °C)

Drive Unit Specifications (motor and frame)

	Brand	Max Power (kW)		Max Current (A)		Frame (IEC)
		50Hz	60Hz	230 VAC*	400 VAC*	
GMP50	Nord 63L2	0.25	0.30	1.21	0.7	63/B14
GMP100	Nord 63L2	0.25	0.30	1.21	0.7	63/B14
GMP500	Nord 71L/2	0.55	0.65	2.17	1.25	71/B14
GMP1000	Nord 71L/2	0.55	0.65	2.17	1.25	71/B14
GMP2000	Siemens 80S/2 IE2	0.75	0.00	2.97	1.71	80/B14
GMP5000	Siemens 80L/2 IE2	1.10	1.30	3.91	2.25	80/B14
GMP10000	Siemens 90L/2 IE2	2.2	2.64	7.65	4.40	90/B14
GMP20000	Siemens 100L/2 IE2	3.00	3.50	10.09	5.80	100/B14
GMP30000	Siemens 100L/2 IE2	3.00	3.50	10.09	5.80	100/B14

Drive Unit Specifications (gearbox and complete drive unit)

Mixer Size	Type Nord	Gear Box Ratio (i)	Outer Driving Head Torque (Nm)	Design Speed (rpm)*
GMP50	SK1SI31	7.5	1	50 - 490
GMP100	SK1SI31	7.5	2	50 - 490
GMP500	SK1SI31	7.5	6	50 - 490
GMP1000	SK1SI31	7.5	8	50 - 490
GMP2000	SK1SI40	7.5	13	50 - 490
GMP5000	SK1SI40	7.5	26	50 - 490
GMP10000	SK1SI50	7.5	35	50 - 450
GMP20000	SK1SI75	10	60	35 -335
GMP30000	SK1SI75	15	150	25 - 245

Additional Information

Environment Temperature**	0 to 40 °C (32 to 104 °F)
Design Pressure	Atmospheric pressure
Operating Speed	Maximum operating speed has to be validated for each process individually, depending on volume, viscosity etc. A variable frequency drive (VFD) must be used with all NovAseptic mixers.
Labeling	Each Drive Unit is individually labeled for full traceability according to our QA procedures.
Packaging	The Drive Unit is packaged in a closed box.
Quality Control	Our Quality Assurance System guarantees the control and traceability at all stages of the manufacturing.
Options	For non-standard NovAseptic Mixer Options, please contact your local sales representative for information.

*Note: Design Speed is the mechanical limit.

**Note: The assembled NovAseptic Mixer may have different design temperature and/or pressure limits. The weakest part in the assembled product sets the final permitted design temperature and pressure limits.



www.merckmillipore.com

Merck Millipore and the M mark are trademarks of Merck KGaA, Darmstadt, Germany. NovAseptic is a registered trademark of Millipore Corporation. Specifications subject to change without notice. Lit. No. SP1004EN00 Rev. D 09/2011 DP SBU-11-04796 Printed in the USA. ©2011 Millipore Corporation, Billerica, MA 01821 U.S.A. All rights reserved.

To Place an Order or Receive Technical Assistance

In Europe, please call Customer Service:

France: 0825.045.645
Spain: 901.516.645 Option 1
Germany: 01805.045.645
Italy: 848.845.645

United Kingdom: 0870.900.46.45

For other countries across Europe, please call: +44 (0) 115 943 0840

Or visit www.merckmillipore.com/offices

For Technical Service visit:

www.merckmillipore.com/techservice