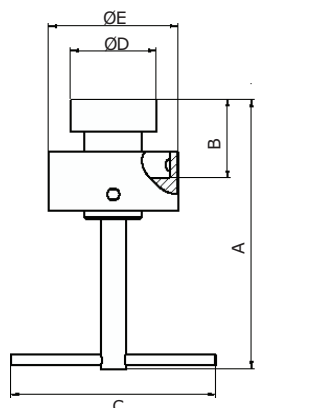


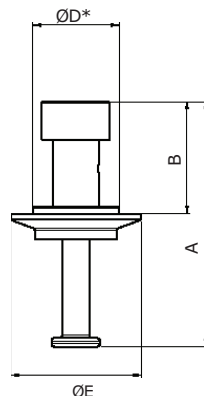
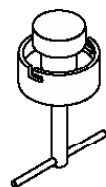
NovAseptic® Mixer, Attractor; GMP, GMP ATEX, USM Mixing Head, HS Rotor & HS Rotor ATEX

Product Description

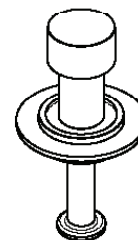
The NovAseptic® mixers offer a complete solution for mixing throughout the process line and are designed for a wide variety of mixing applications in the pharmaceutical and biotechnology industries.



GT05/AW, GT1/AW, GT5/AW, GT10/AW



GT60/AW



Nominal Dimensions in mm (in.)

Catalogue No.	A	B	C	D	D*	E	Compatible Mixer
GT05/AW	138 (5.43)	39 (1.54)	114 (4.49)	27 (1.06)	—	54 (2.13)	GMP50, GMP50 ATEX, HS T10 & USM T10
GT1/AW	151 (5.94)	44 (1.73)	114 (4.49)	47 (1.85)	—	72 (2.83)	GMP100 & GMP100 ATEX
GT5/AW	161 (6.34)	45 (1.77)	114 (4.49)	47 (1.85)	—	72 (2.83)	GMP500 & GMP500 ATEX
GT10/AW	175 (6.89)	55 (2.17)	117 (4.61)	55 (2.17)	—	125 (4.92)	GMP1000 & GMP1000 ATEX
GT60/AW	172.5 (6.79)	79.5 (3.13)	—	—	60 (2.36)	91 (3.58)	HST60 & HS T60 ATEX, USM T60

Specifications

Net Weight (approximate)					
Attractor tool	GT05/AW	GT1/AW	GT5/AW	GT10/AW	GT60/AW
Weight kg (lb)	0.5 (1.1)	0.9 (2.0)	1.1 (2.43)	1.4 (3.09)	1.5 (3.3)

Material	
Material	Stainless Steel

Additional Information	
Packaging	The Rotor is packaged in a closed box.
Quality Control	Our Quality Assurance System guarantees the control and traceability at all stages of the manufacturing.

Technical Assistance

For more information, please visit [SigmaAldrich.com](https://www.SigmaAldrich.com) for up-to-date worldwide contact information

