



Hycon-O Socket & Bush

Used for entry to Panels, Inspection Boxes and Trunkings.

Part No: HS&B

Available in: 1" – 1.5" – 2" – 2.5" – 3" – 4"



Hycon-O Joiner

Used to join Conduits to Conduits, Bends, Tee's and Reducers.

Part No: HJ

Available in: 1" – 1.5" – 2" – 2.5" – 3" – 4"



Hycon Clip – Standard

Used in combination with Clip Adaptor, Support Adaptor, Threaded Bar, Bsp Nipple & Conduit Fixing Disc to support the conduit system. Used in Hycon-O and Hycon-S.

Part No: HCLP

Available in: 1" – 1.5" – 2" – 2.5" – 3" – 4"

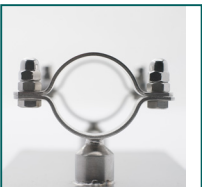


Hycon Clip – Hinged

Used in combination with Clip Adaptor, Support Adaptor, Threaded Bar, Bsp Nipple & Conduit Fixing Disc to support the conduit system. Used in Hycon-O and Hycon-S.

Part No: HCLP-H

Available in: 1" – 1.5" – 2" – 2.5" – 3" – 4"



Hycon Clip – Domed

Used in combination with Clip Adaptor, Support Adaptor, Threaded Bar, Bsp Nipple & Conduit Fixing Disc to support the conduit system. Used in Hycon-O and Hycon-S.

Part No: HCLP-D

Available in: 1" – 1.5" – 2" – 2.5" – 3" – 4"



Hycon Saddle

Used to fix the conduit directly to a surface. Used in Hycon-O and Hycon-S.

Part No: HCLP-S

Available in: 1" – 1.5" – 2" – 2.5" – 3" – 4"



Hycon Bsp Clip Adaptor

Used as part of the hygienic clip assembly to support the conduit system. Used in Hycon-O and Hycon-S.

Part No: HCLPADP



Hycon Support Adaptor

Used as part of the hygienic clip assembly to support the conduit system. Used in Hycon-O and Hycon-S.

Part No: HCADP

Hycon[®] Product Description



Hycon Bsp Nipple

Used as part of the hygienic clip assembly to support the conduit system. Mainly used as a clip to clip connection. Used in Hycon-O and Hycon-S.

Part No: HCLPADP



Hycon Threaded Bar

Used as part of the hygienic clip assembly to support the conduit system. Used in Hycon-O and Hycon-S.

Part No: HBRM10

Available in: 1 or 3 metre lengths



Hycon Conduit Fixing Disc

Used as part of the hygienic clip assembly to support the conduit system. Also used as part of the Footplate assembly. Used in Hycon-O and Hycon-S.

Part No: HCDCS

Available in: 1" – 1.5" – 2" – 2.5" – 3" – 4"



Hycon Conduit Blank Insert

Used to seal the conduit ends. Can be drilled to accommodate the number of cables or airlines in the conduit. Used in Hycon-O and Hycon-S.

Part No: HBI

Available in: 1" – 1.5" – 2" – 2.5" – 3" – 4"



Hycon Conduit Multi Hole Insert

Used to seal the conduit ends. Is supplied pre-drilled to the customers specifications. Used in Hycon-O and Hycon-S. Maximum number of holes dependant on size. Larger sizes available on request.

Part No: HIM

Available in: 1" – 1.5" – 2" – 2.5" – 3" – 4"



Hycon Single Hole Insert

Used to seal the conduit ends. Is supplied pre-drilled to the customers specifications. Used in Hycon-O and Hycon-S.

Part No: HIM

Available in: 1" – 1.5" – 2" – 2.5" – 3" – 4"



Hycon Conduit Open Insert

Used on conduit ends to protect the cables or airlines from sharp edges. Usually used with Hycon- Used in Hycon-O and Hycon-S.

Part No: HIO

Available in: 1" – 1.5" – 2" – 2.5" – 3" – 4"



Hycon Flashing Disc

Used to cover conduit entries to ceilings and walls to give a nice clean finish. Used in Hycon-O and Hycon-S.

Part No: HRST

Available in: 1" – 1.5" – 2" – 2.5" – 3" – 4"

Hycon[®] Product Description



Hycon-O & Hycon-S Ceiling Bulkhead

Used for Hycon Ceiling Drops. Can be supported from overhead or within the cleanroom when overhead support is required. The use of load bearing washers & threaded bar will be necessary.

Part No: HBH

Available in: 1" – 1.5" – 2" – 2.5" – 3" – 4"



Hycon-O & Hycon-S Reducer-Expander

Used to expand the conduit end when the number of cable glands cannot be accommodated in the conduit insert for that size conduit. Used to reduce or increase from conduit to conduit.

Part No: HR

Available in: Sizes available on request.



Hycon Footplate

Used for Floor Support. Examples are: Ceiling Drops – Floor Stands - Isolators Emergency Stops – Push Button Stations etc. Used in Hycon-O and Hycon-S.

Part No: HFP

Available in: 1" – 1.5" – 2" – 2.5" – 3" – 4"



Hycon Inspection Box

Used on the Hycon installation to allow access to cables, airlines etc. or as a junction box for 2-way, 3-way & 4-way installations etc. Available blank or with all combinations of hole entries. Used in Hycon-O and Hycon-S. Bespoke sizes available on request.

Part No: HIB

Available in: Size A: 160x80x80mm
Size B: 200x100x100mm
Size C: 200x150x150mm



Hycon Air Sampler

Available in single hole or multi hole format. Used for sampling air within the cleanroom. Non stock item - only available on special request.

Part No: HASU



Hycon Socket & Bush Gasket

Gaskets for the Socket & Bush. Available in packs of 50.

Part No: HS&BG

Available in: 1" – 1.5" – 2" – 2.5" – 3" – 4" Socket & Bush



Hycon Bracket Joiner

Specially designed to eliminate clamping around the conduit. Non stock item - only available on special request.

Part No: HBJ

Available in: 1" – 1.5" – 2" – 2.5" – 3" – 4"



Hycon Bonding Agent

Used to bond the connections between the conduit and fittings in the Hycon-O installations. Loctite 638. See "Hycon Installation Guide" for application details.

Part No: HABA

Available in: 50ml container

Hycon[®] Product Description



Hycon Sealing Agent

Used to seal the connections between the conduit and fittings in the Hycon-S installations. Loctite 5366. See "Hycon Installation Guide" for application details.

Part No: HASA



Emergency Stop Station

Used as an Emergency lock off Station.

Part No: HES

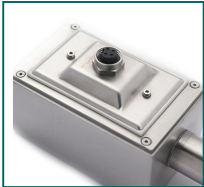


Hycon to Metric/NPT Thread Adaptor

Used to interconnect Hycon with standard metric sized components.

Part No: HMTA

Available in: Available in all sizes



Turck Boxes

Customised Inspection Boxes to accommodate the Turck system.

Part No: TURK



Round Inspection Box

Round Inspection boxes come in two sizes, 20mm and 25mm. Larger sizes available on request.

Part No: HRIB

Available in: 20mm – 25mm



O Rings

Made from Nitrile K6 material. Comes in a pack of 50.

Part No: HOR

Available in: 1" – 1.5" – 2" – 2.5" – 3" – 4"



Hycon Trunking – 3 Metre Length

Trunking – Compartmental Trunking -Trunking Headers. Trunking Bespoke Specials only available on request.

Part No: HTL

Available in: 50 x 50mm – 75 x 75mm – 100 x 100mm –
130 x 75mm – 150 x 150mm – 300 x 100mm – 600 x 150mm



Hycon Support Adaptor

Used as part of the hygienic clip assembly to support the conduit system. Used in Hycon-O and Hycon-S.

Part No: HCADP

Hycon[®] Product Description



Socket & Bush Spanner

Socket & Bush Spanner is used to tighten a Socket & Bush in place.

Part No: HAS&B

Available in: 1" – 1.5" – 2" – 2.5" – 3" – 4"



Joiners

Used to join Conduits to Conduits, Bends, Tees, Footplates, Bulkheads and Reducers. Used in Hycon-S.

Part No: HJ

Available in: 1" – 1.5" – 2" – 2.5" – 3" – 4"



Hycon-O Bend with Tee

Used to route and split cabling from a straight conduit via a bend in two directions. Conduit can be flared to facilitate a Hycon S version. Non-stock item - available only on request.

Part No: HB+T

Available in: 1" – 1.5" – 2" – 2.5" – 3" – 4"



Hycon-O Seagull Bend

Used to split and route cabling in two directions. Conduit can be flared to facilitate a Hycon S version. Non-stock item - available only on request.

Part No: HBSG

Available in: 1" – 1.5" – 2" – 2.5" – 3" – 4"



Hycon-O & Hycon-S Conduits

Conduits/Piping/Tubing available in 3 mtr / 10 ft lengths.

Part No: HC

Available in: 1" – 1.5" – 2" – 2.5" – 3" – 4"



Hycon-O & Hycon-S Tee

Used as an integral part of the Hycon Containment System to create T junctions or as an exit point.

Part No: HT

Available in: 1" – 1.5" – 2" – 2.5" – 3" – 4"



Hycon-O & Hycon-S 90° Bend

Used as an integral part of the Hycon Containment System for 90 degree routing or as an exit point.

Part No: HB90

Available in: 1" – 1.5" – 2" – 2.5" – 3" – 4"



Hycon-O & Hycon-S 45° Bend

Used as an integral part of the Hycon Containment System for 45 degree routing or as an exit point.

Part No: HB45

Available in: 1" – 1.5" – 2" – 2.5" – 3" – 4"



In accordance with European Standard EN -IEC 61386-1 AND ** IEC 61386-21, IEC 61386-22, IEC 61386-23, IEC 61386-24 and/or IEC 61386-25, "STAINLESS STEEL CONDUIT" or "STAINLESS STEEL CONDUIT FITTING" [18EC]

DUNREIDY ENGINEERING LIMITED

Classification Coding: 444411664414



Dunreidy Engineering Ltd.,
Unit 53 Hebron Industrial Estate,
Kilkenny, R95 Y880, Ireland.

E: enquiries@dunreidy.com
T: +353 (0)56 7771377
www.dunreidy.com